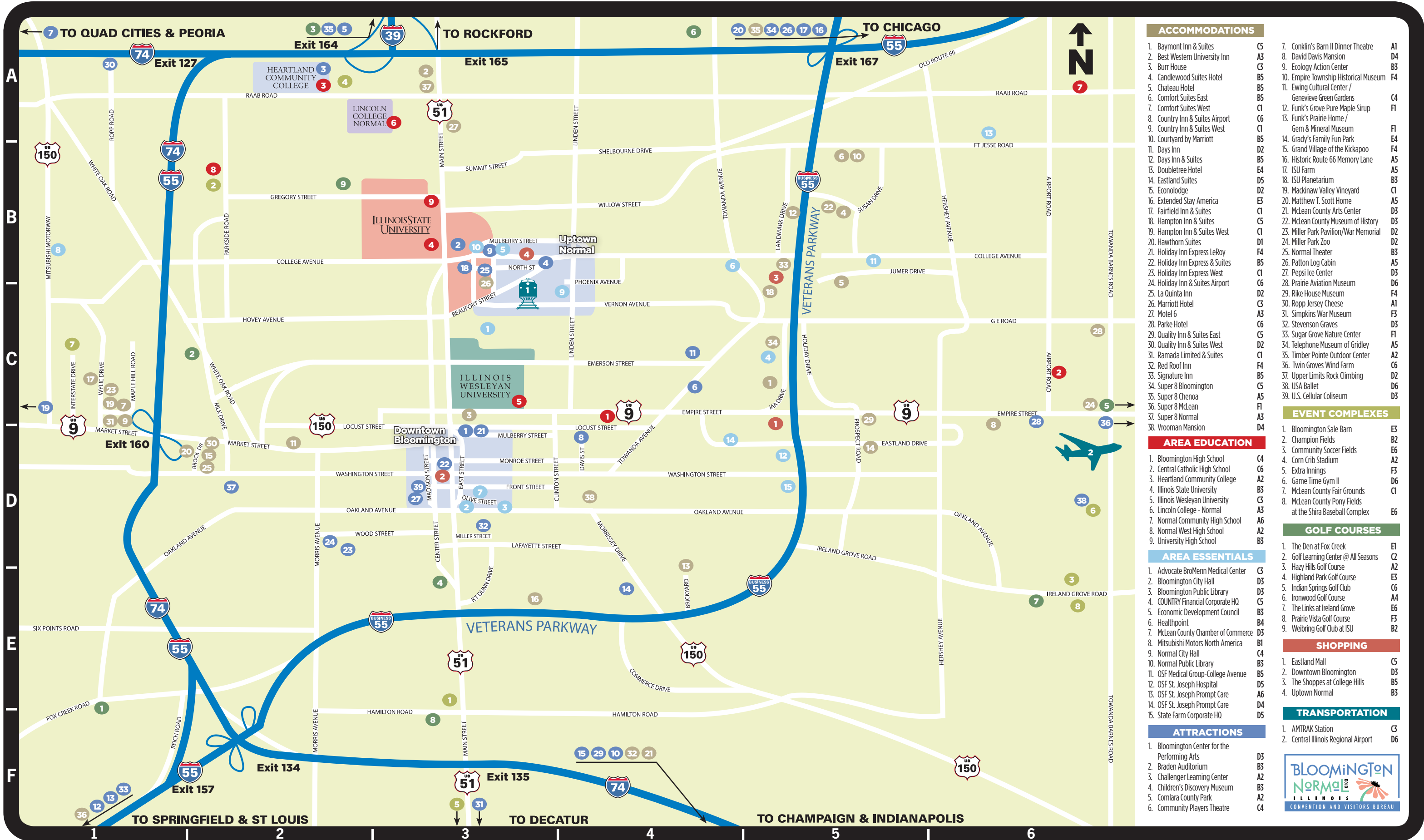


The Bloomington-Normal Area



ACCOMMODATIONS

- | | | | |
|----------------------------------|----|---|----|
| 1. Baymont Inn & Suites | C5 | 7. Conklin's Barn II Dinner Theatre | A1 |
| 2. Best Western University Inn | A3 | 8. David Davis Mansion | D4 |
| 3. Burr House | C3 | 9. Ecology Action Center | B3 |
| 4. Candlewood Suites Hotel | B5 | 10. Empire Township Historical Museum | F4 |
| 5. Chateau Hotel | B5 | 11. Ewing Cultural Center / Genevieve Green Gardens | C4 |
| 6. Comfort Suites East | B5 | 12. Funk's Grove Pure Maple Sirup | F1 |
| 7. Comfort Suites West | C1 | 13. Funk's Prairie Home / Gem & Mineral Museum | F1 |
| 8. Country Inn & Suites Airport | C6 | 14. Grady's Family Fun Park | E4 |
| 9. Country Inn & Suites West | C1 | 15. Grand Village of the Kickapoo | F4 |
| 10. Courtyard by Marriott | B5 | 16. Historic Route 66 Memory Lane | A5 |
| 11. Days Inn | D2 | 17. ISU Farm | A5 |
| 12. Days Inn & Suites | B5 | 18. ISU Planetarium | B3 |
| 13. Doubletree Hotel | E4 | 19. Mackinaw Valley Vineyard | C1 |
| 14. Eastland Suites | D5 | 20. Matthew T. Scott Home | A5 |
| 15. Econolodge | D2 | 21. McLean County Arts Center | D3 |
| 16. Extended Stay America | E3 | 22. McLean County Museum of History | D3 |
| 17. Fairfield Inn & Suites | C1 | 23. Miller Park Pavilion/War Memorial | D2 |
| 18. Hampton Inn & Suites | C5 | 24. Miller Park Zoo | D2 |
| 19. Hampton Inn & Suites West | C1 | 25. Normal Theater | B3 |
| 20. Hawthorn Suites | D1 | 26. Patton Log Cabin | A5 |
| 21. Holiday Inn Express LeRoy | F4 | 27. Pepsi Ice Center | D3 |
| 22. Holiday Inn Express & Suites | B5 | 28. Prairie Aviation Museum | D6 |
| 23. Holiday Inn Express West | C1 | 29. Rike House Museum | F4 |
| 24. Holiday Inn & Suites Airport | C6 | 30. Ropp Jersey Cheese | A1 |
| 25. La Quinta Inn | D2 | 31. Simpkins War Museum | F3 |
| 26. Marriott Hotel | C3 | 32. Stevenson Graves | D3 |
| 27. Motel 6 | A3 | 33. Sugar Grove Nature Center | F1 |
| 28. Parke Hotel | C6 | 34. Telephone Museum of Gridley | A5 |
| 29. Quality Inn & Suites East | C5 | 35. Timber Pointe Outdoor Center | A2 |
| 30. Quality Inn & Suites West | D2 | 36. Twin Groves Wind Farm | C6 |
| 31. Ramada Limited & Suites | C1 | 37. Upper Limits Rock Climbing | D2 |
| 32. Red Roof Inn | F4 | 38. USA Ballet | D6 |
| 33. Signature Inn | B5 | 39. U.S. Cellular Coliseum | D3 |
| 34. Super 8 Bloomington | C5 | | |
| 35. Super 8 Chenoa | A5 | | |
| 36. Super 8 McLean | C5 | | |
| 37. Super 8 Normal | F1 | | |
| 38. Vrooman Mansion | A3 | | |

EVENT COMPLEXES

- | | |
|--|----|
| 1. Bloomington Sale Barn | E3 |
| 2. Champion Fields | B2 |
| 3. Community Soccer Fields | E6 |
| 4. Corn Crib Stadium | A2 |
| 5. Extra Innings | F3 |
| 6. Game Time Gym II | D6 |
| 7. McLean County Fair Grounds | C1 |
| 8. McLean County Pony Fields at the Shira Baseball Complex | E6 |

GOLF COURSES

- | | |
|---------------------------------------|----|
| 1. The Den at Fox Creek | E1 |
| 2. Golf Learning Center @ All Seasons | C2 |
| 3. Hazy Hills Golf Course | A2 |
| 4. Highland Park Golf Course | E3 |
| 5. Indian Springs Golf Club | C6 |
| 6. Ironwood Golf Course | A4 |
| 7. The Links at Ireland Grove | E6 |
| 8. Prairie Vista Golf Course | F3 |
| 9. Weibring Golf Club at ISU | B2 |

SHOPPING

- | | |
|---------------------------------|----|
| 1. Eastland Mall | C5 |
| 2. Downtown Bloomington | D3 |
| 3. The Shoppes at College Hills | B5 |
| 4. Uptown Normal | B3 |

TRANSPORTATION

- | | |
|--------------------------------------|----|
| 1. AMTRAK Station | C3 |
| 2. Central Illinois Regional Airport | D6 |



AREA EDUCATION

- | | |
|---------------------------------|----|
| 1. Bloomington High School | C4 |
| 2. Central Catholic High School | C6 |
| 3. Heartland Community College | A2 |
| 4. Illinois State University | B3 |
| 5. Illinois Wesleyan University | C3 |
| 6. Lincoln College - Normal | A3 |
| 7. Normal Community High School | A6 |
| 8. Normal West High School | A2 |
| 9. University High School | B3 |

AREA ESSENTIALS

- | | |
|--------------------------------------|----|
| 1. Advocate BroMenn Medical Center | C3 |
| 2. Bloomington City Hall | D3 |
| 3. Bloomington Public Library | D3 |
| 4. COUNTRY Financial Corporate HQ | C5 |
| 5. Economic Development Council | B3 |
| 6. Healthpoint | B4 |
| 7. McLean County Chamber of Commerce | D3 |
| 8. Mitsubishi Motors North America | B1 |
| 9. Normal City Hall | C4 |
| 10. Normal Public Library | B3 |
| 11. OSF Medical Group-College Avenue | B5 |
| 12. OSF St. Joseph Hospital | D5 |
| 13. OSF St. Joseph Prompt Care | A6 |
| 14. OSF St. Joseph Prompt Care | D4 |
| 15. State Farm Corporate HQ | D5 |

ATTRACTIONS

- | | |
|---|----|
| 1. Bloomington Center for the Performing Arts | D3 |
| 2. Braden Auditorium | B3 |
| 3. Challenger Learning Center | A2 |
| 4. Children's Discovery Museum | B3 |
| 5. Comlara County Park | A2 |
| 6. Community Players Theatre | C4 |